



A Force for
**Growth &
Prosperity**

2016-2017 Corporate Citizenship
Report **Highlights**



DTE Energy



Community

We see our work through the eyes of those we serve. As one of Michigan's largest investors in human and capital resources, we strive to transform our communities through strategic investments and volunteer commitments.

The **DTE Energy Foundation** helps make our cities thriving places to live, work and play. We do this by supporting education and employment, environmental leadership, neighborhood revitalization, and arts and culture – all of which helps communities flourish and improves the quality of life for Michigan residents.

In 2016, the DTE Energy Foundation awarded **\$15 million** in grants to **360 nonprofit organizations** to lift up communities throughout Michigan.

Through our Care Force commitment, DTE Energy employees volunteered more than **21,000 hours** to **300+ organizations** in 2016.

Jobs and Education

With a clear understanding of Michigan's workforce needs, we are laser focused on education and employment initiatives to bolster our state's skilled trades and technical education pipelines.



Economic Development 2016 Highlights

\$1.3 billion in spending with
Michigan-based suppliers

\$410 million in spending with
diverse suppliers

Payroll and taxes associated with
10,000 DTE employees

Partnerships with 38 economic development organizations across the state

Cumulative Impact of In-State Spending since 2010:

- \$2.6 billion spent with Michigan suppliers
- 13,000 new jobs created

Please visit the full DTE Energy Citizenship Report on our website at www.dtecitizenship.com. There you can find more information about our community engagement initiatives and many other citizenship efforts.

Contact Us: DTE Energy, One Energy Plaza, Detroit, MI 48226-1221
citizenship@dteenergy.com

Customers

At DTE Energy, we understand how much our customers depend on the energy we provide. That's why we're always working to improve our systems to deliver energy safely and reliably.

In March 2017, we experienced the worst weather-related outage in the company's history, affecting 800,000 customers. We restored power to all customers at an unprecedented rate of recovery considering the magnitude of the storm. DTE continues its investment in strengthening our infrastructure, increasing reliability for those we serve.



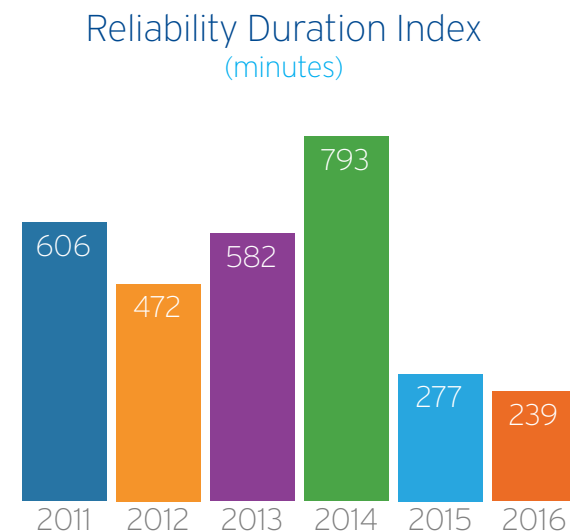
DTE works hard to control costs and keep energy affordable for our customers.

The average bill for DTE Electric residential customers is **6% lower than the national average.**

Our **Low Income Self-Sufficiency Plan** helps thousands of customers plan their energy payments and avoid service interruptions.

In 2016, DTE donated **\$5.5 million to The Heat and Warmth Fund (THAW)** to help our most vulnerable customers.

Our electric reliability in 2016 was the best in over a decade. We achieved a **70% improvement in reliability** over the past two years.



Reliability Duration Index is calculated as the length of customer interruptions divided by the total number of customers; also called the System Average Interruption Duration Index, or SAIDI.

Know Your Own Power

The DTE Energy website has many resources to help customers be more energy efficient and save money.

Residential Customers:
dteenergy.com/saveenergy

Business Customers:
dteenergy.com/savenow

In 2016, DTE Gas **upgraded 100 miles of gas mains** and **290 miles of service lines** to homes.

Plans for 2017-2021: **Upgrade 140 miles of gas mains** and **320 miles of service lines** annually.

DTE Energy Transformation

We're transforming the way we supply energy, using more natural gas, wind and solar. This change will continue over the next 15 years. As we move toward cleaner energy sources, we remain focused on maintaining reliability and keeping energy affordable for our customers.

Renewable Energy

Electricity from renewable resources - wind, sunlight and biomass - helps us meet our customers' energy needs while reducing our environmental impact.

DTE is Michigan's largest investor in and producer of renewable energy. Since 2008, we have driven more than **\$2 billion** in spending on **renewable energy projects**.

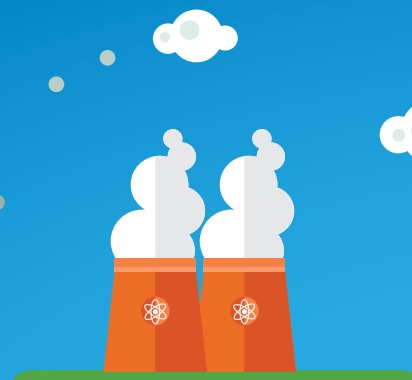
The electric power industry is undergoing the most dramatic change we have seen in 50+ years. DTE is managing our response to this transformation with a focus on working safely, improving reliability and maintaining affordability for our customers.



Coal

GENERATION	2005:	78%
	2016:	61%

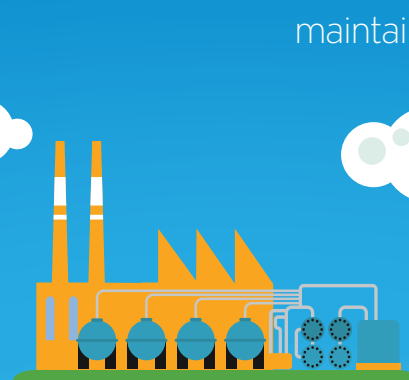
Our largest fuel source is coal. We are gradually reducing our coal-fired generating capacity and replacing some of it with natural gas and renewables. As our plants age, coal generation is becoming more expensive over time compared to other alternatives.



Nuclear

GENERATION	2005:	18%
	2016:	21%

Nuclear power is the only source of emission-free baseload generation. With the recent license renewal for our Fermi 2 plant, nuclear continues as an integral part of DTE's generation portfolio.



Natural Gas

GENERATION	2005:	3%
	2016:	8%

With increasing availability of natural gas from domestic production, gas prices have declined and our use of natural gas as a generation fuel has ramped up. By taking advantage of low-cost gas resources, DTE can keep energy affordable for our customers.



Wind

GENERATION	2005:	0%
	2016:	6%

We invested significantly in wind power over the past several years, which benefits both air quality and regional economic development. DTE's local spending creates jobs for Michigan's economy.



Other Renewables

(solar, biomass, hydro)

GENERATION	2005:	1%
	2016:	4%

Other types of energy sources are a small but growing part of DTE's generating portfolio. We are constructing major solar facilities, as solar panels are becoming more efficient and affordable.



Energy Efficiency

DTE provides tools and resources that empower our customers to be more energy efficient and optimize their energy use. Through technology, innovation and collaboration, we're helping Michigan families and businesses save money on their energy bills. This protects the environment by conserving natural resources and it supports our local economy.

Environment and Climate Change

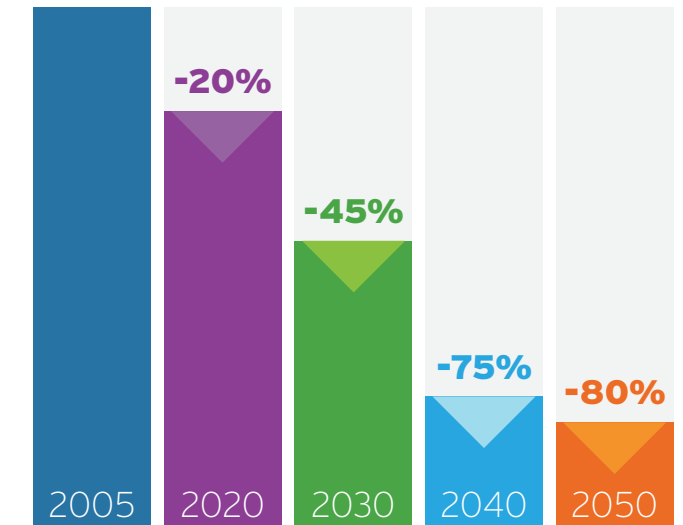
DTE Energy is committed to protecting clean air, water and land resources for the health and enjoyment of future generations.

Energy Efficiency

With support from DTE's energy efficiency programs, our customers save money and help the environment by installing more efficient appliances and lights, adding insulation, weatherizing homes and conducting boiler tune-ups.



DTE Goals for Reducing Greenhouse Gas Emissions



Greening Our Operations

Since 2005 we have reduced emissions **83% for particulate, 76% for SO₂, 69% for NO_x and 86% for mercury.**

In 2016, DTE **recycled more than 145 million pounds of waste material** (including ferrous metal, non-ferrous metal, wood, cardboard, electronics, paper, plastics and more).

DTE is one of the largest landowners in Michigan. We provide and enhance natural habitats on thousands of acres of land. DTE has **36 sites certified by the Wildlife Habitat Council.**

We are on track to **meet our goal of 20% reduction in CO₂ emissions by 2020.**

Since 2009, more than **1.8 million DTE customers have saved 3.7 billion kWh of electricity** through our energy efficiency programs... and more than **1.1 million customers have saved 7.9 million cubic feet of natural gas.**

Employees

Our exceptional team of DTE employees are dedicated to bringing their best energy to work every day. As the energy industry undergoes significant change, we're building a workforce that will lead us into the future.

We work hard to maintain an open and inclusive culture among our 10,000 employees. In particular, DTE Energy is recognized for excellence in recruiting veterans and in hiring and training people with disabilities.

DTE Energy is the only energy company in the world that has ever been recognized as a **Gallup Great Workplace**. We have now received this award a remarkable **four years in a row**.



2016: Our **Best Safety Performance** in company history. In 2016, we reduced our rate of injuries by nearly 40% compared to 2015.

In addition, DTE Gas recently received the Safety Achievement Award from the American Gas Association for 2016 - the second consecutive year we have earned this prestigious recognition.

Company Highlights

In 2016, DTE Energy delivered solid financial results and set operational records while securing Michigan's energy future.

DTE Energy
\$10.6 billion operating revenue

DTE Electric
2.2 million customers

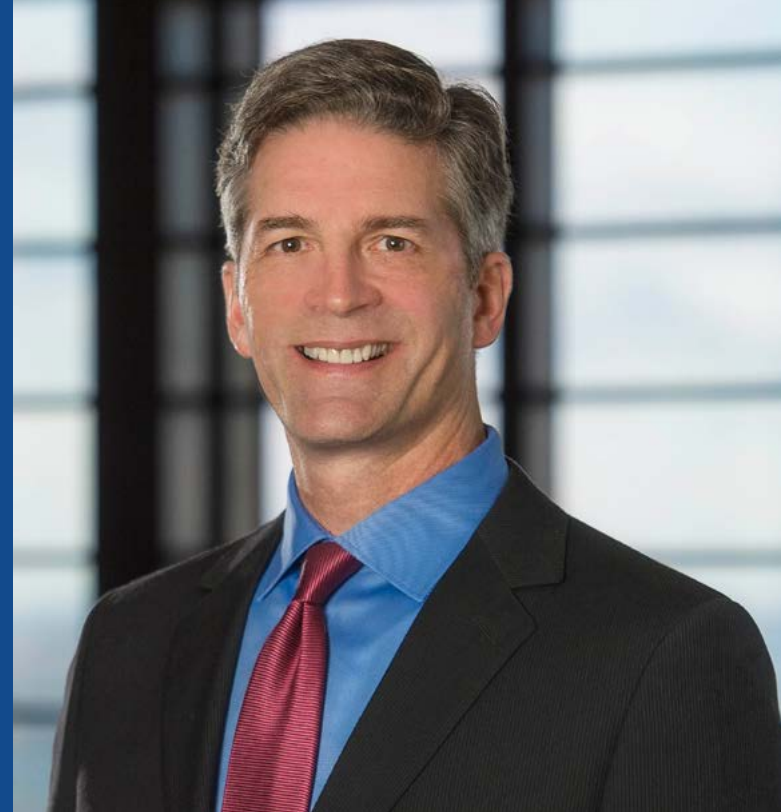
7,600 square mile service territory

Power generated by **coal, nuclear, natural gas, oil, wind, biomass and solar**

DTE Gas
1.2 million customers
20,300 square mile service territory
Natural gas storage, transport and distribution

Non-utility Businesses
Gathering pipelines near gas production areas
Partial ownership of **major interstate pipelines**

60+ Power and Industrial Projects in 17 states across the country



"We strive to become both the best energy company in the world - and the best energy company for the world. It is the capability and determination of our 10,000 employees that gives me great confidence we can achieve this goal."

- Gerry Anderson
DTE Energy Chairman
and CEO

Read the entire message at dtecitizenship.com

A Force for Growth & Prosperity Across Michigan 2016-2017



One Energy Plaza, Detroit, MI 48226-1221
citizenship@dteenergy.com

Printed on New Leaf Reincarnation 100, made of 100% recycled fiber, designated Ancient Forest Friendly™ and manufactured with electricity that is offset with Green-e® certified renewable energy certificates.

170564/ALLIED/30K/05-17